

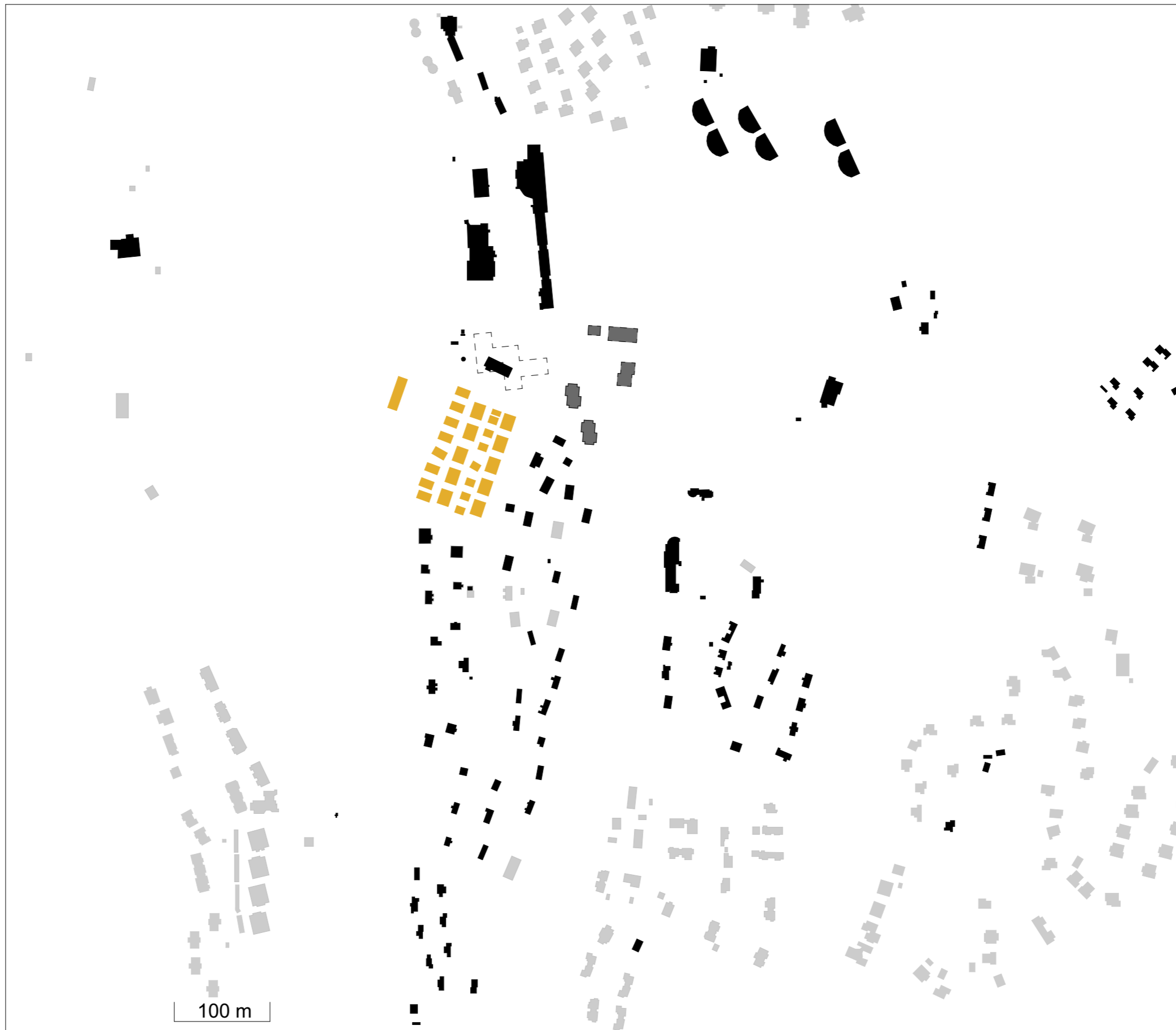
LIITE 4

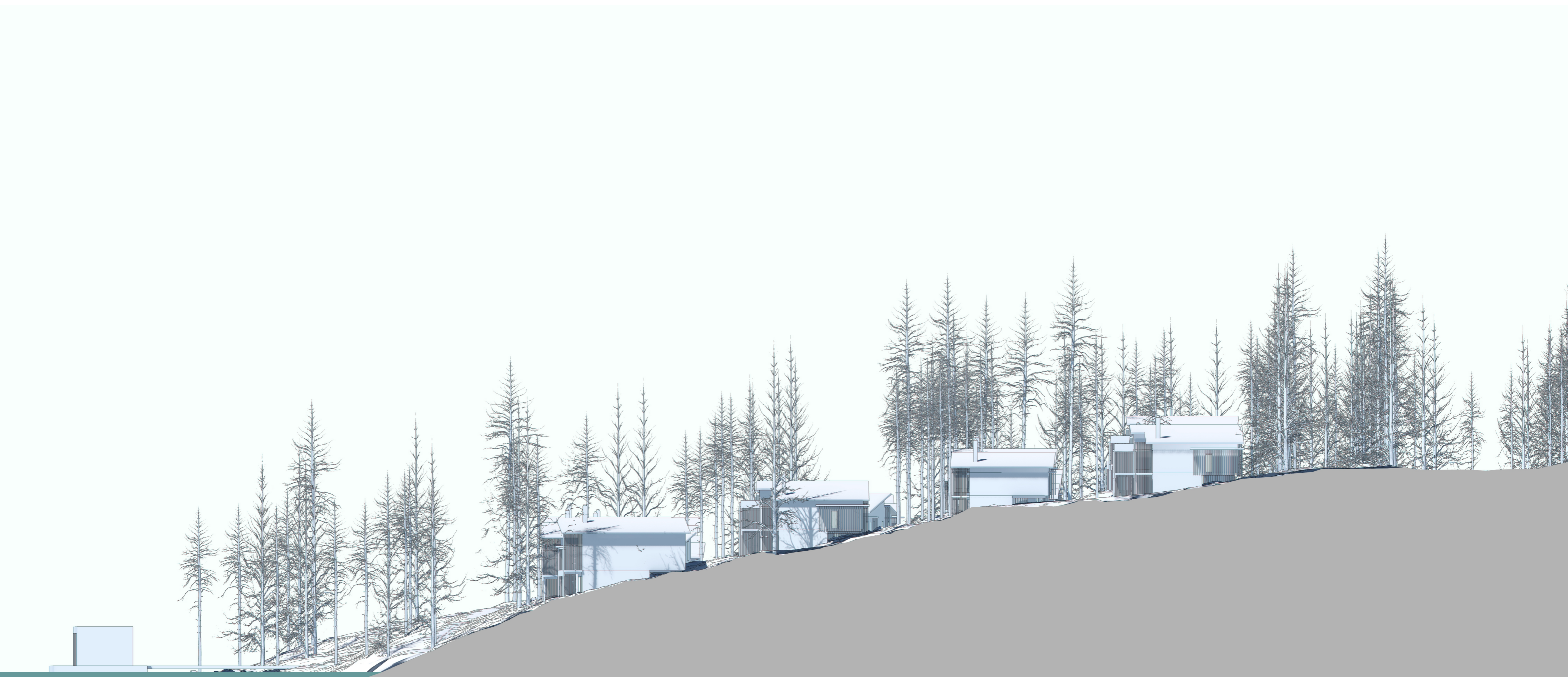
Arvioitu rakentamisen mittakaava 35 rakennusta
Rantavillat 8 kpl x 168 kem²
Paritalot 10 kpl x 114 kem² ja 10 kp x 135 kem²
Pienet rakennukset 7 kpl x 90 m²
Tekninen rakennus 70 kem²

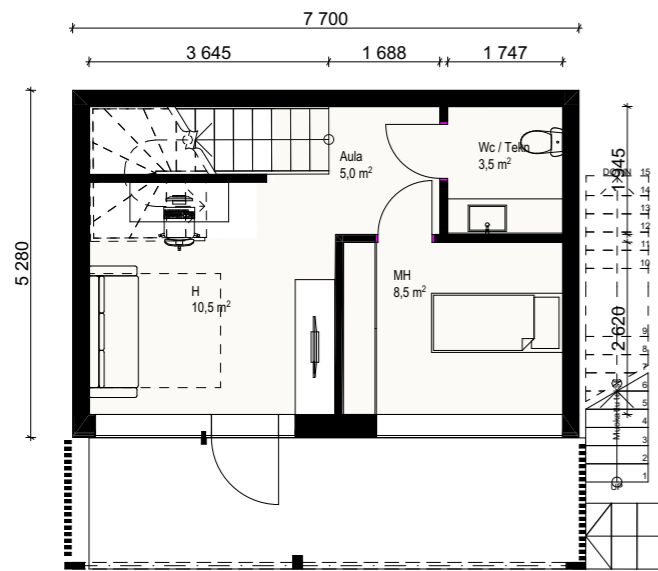
Yht. 1344 kem²
Yht. 2490 kem²
Yht. 630 kem²
Yht. 70 kem²

YHT:n. 4534kem²

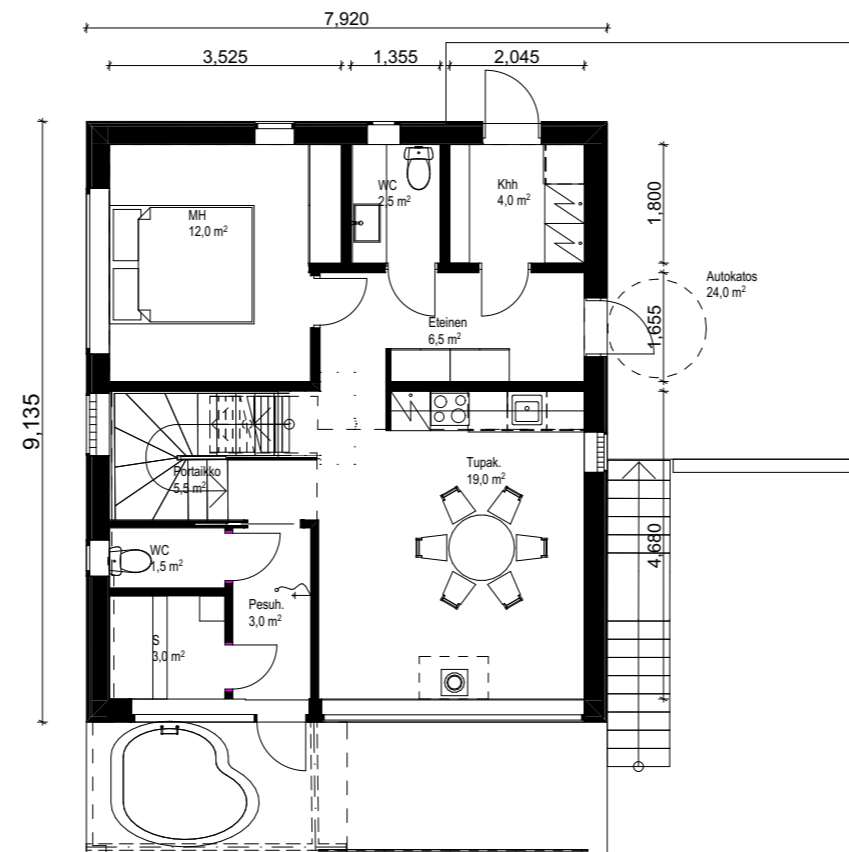




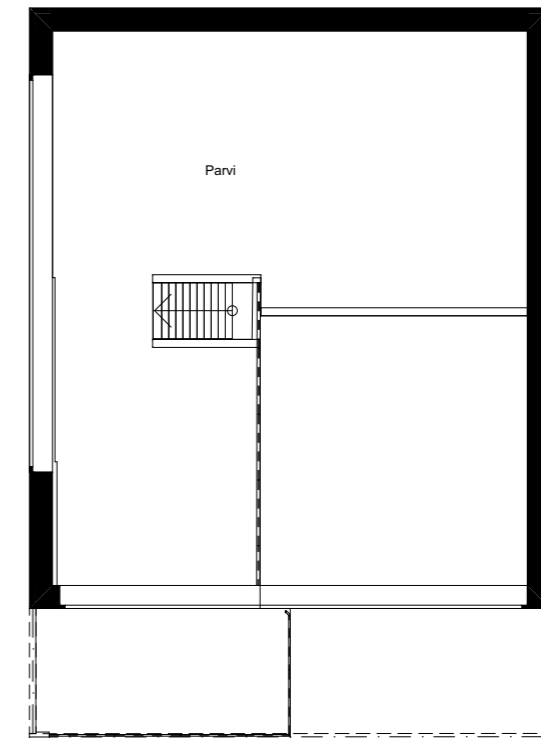




1. kerros



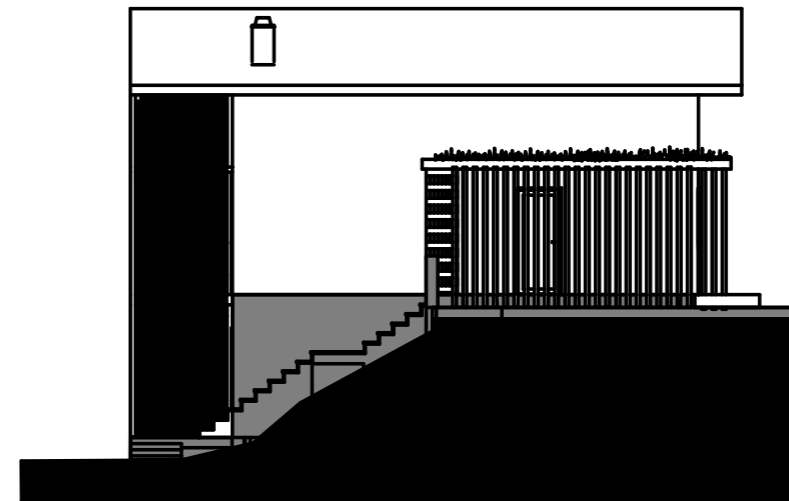
2. kerros (3)



parvikerros



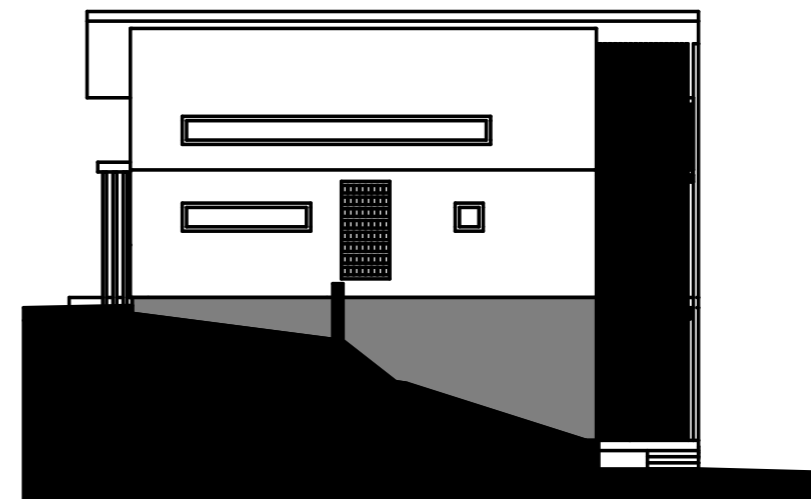
Julkisivu itään



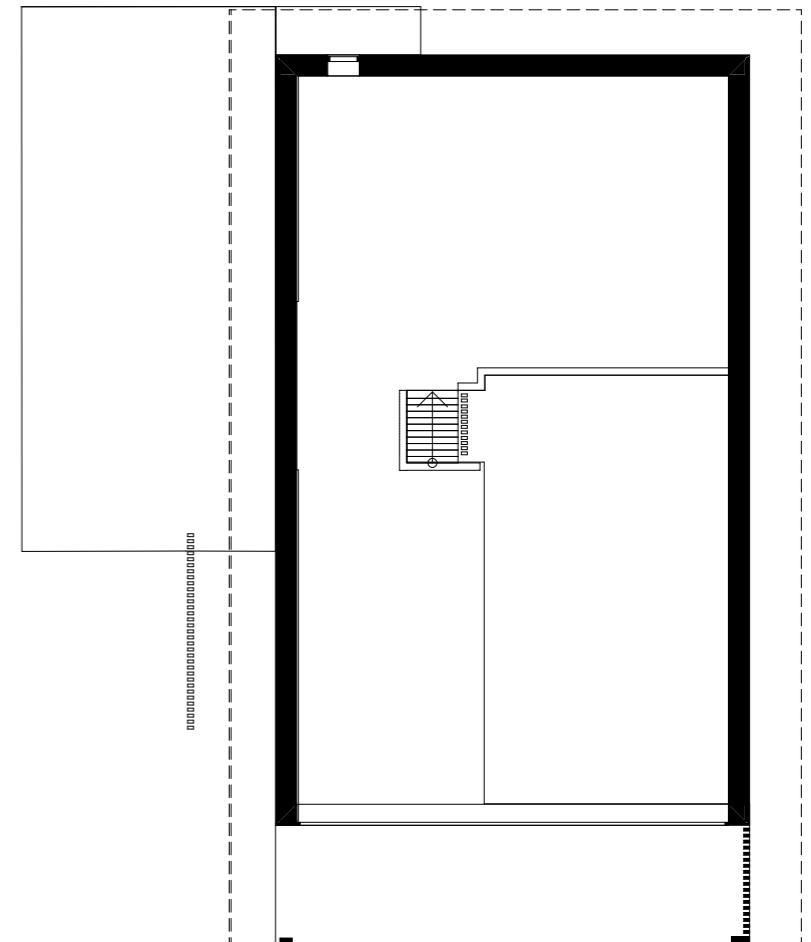
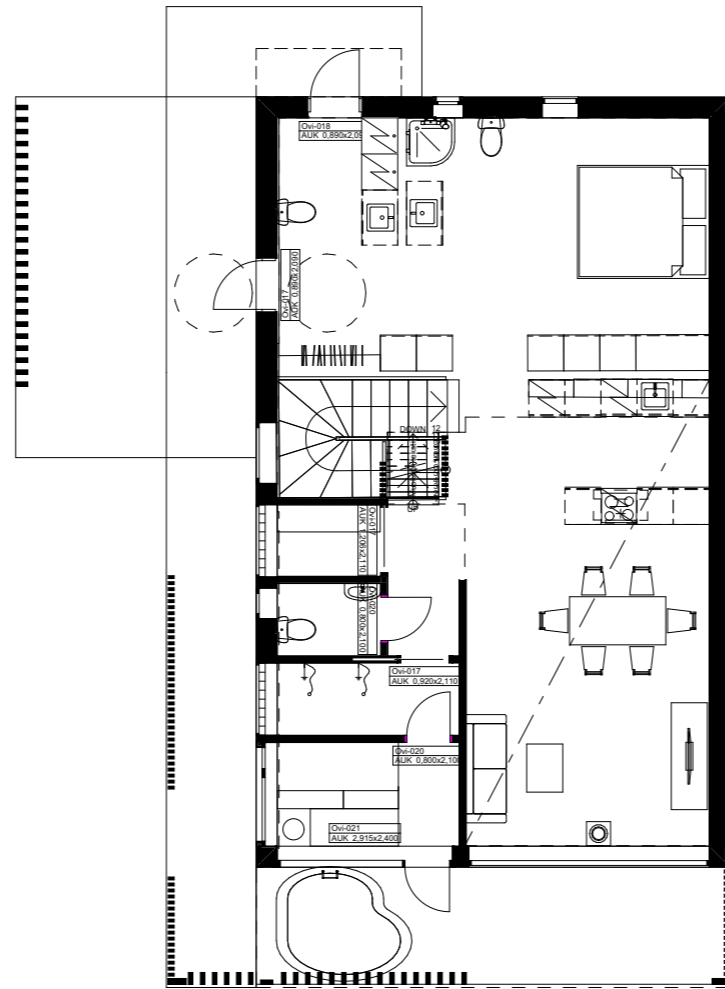
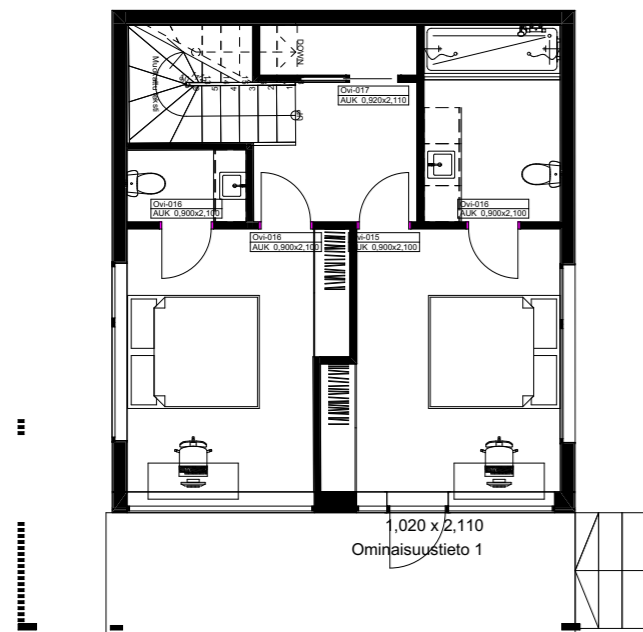
Julkisivu etelään



Julkisivu länteen



Julkisivu pohjoiseen



0.

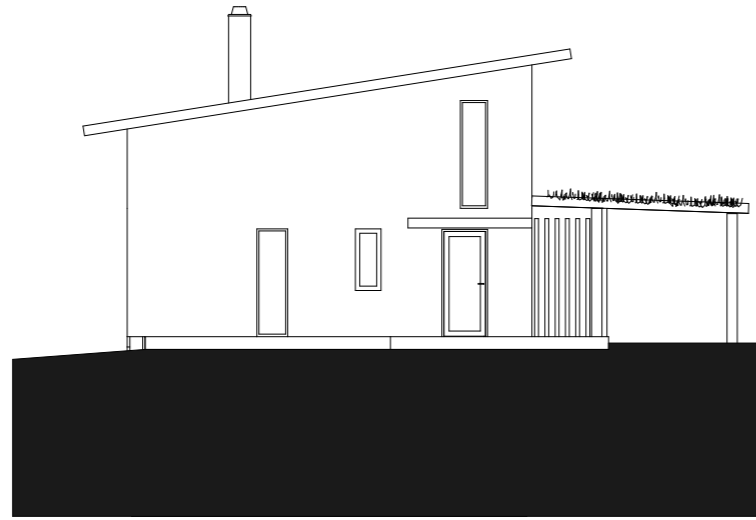
1. kerros (1)

1.

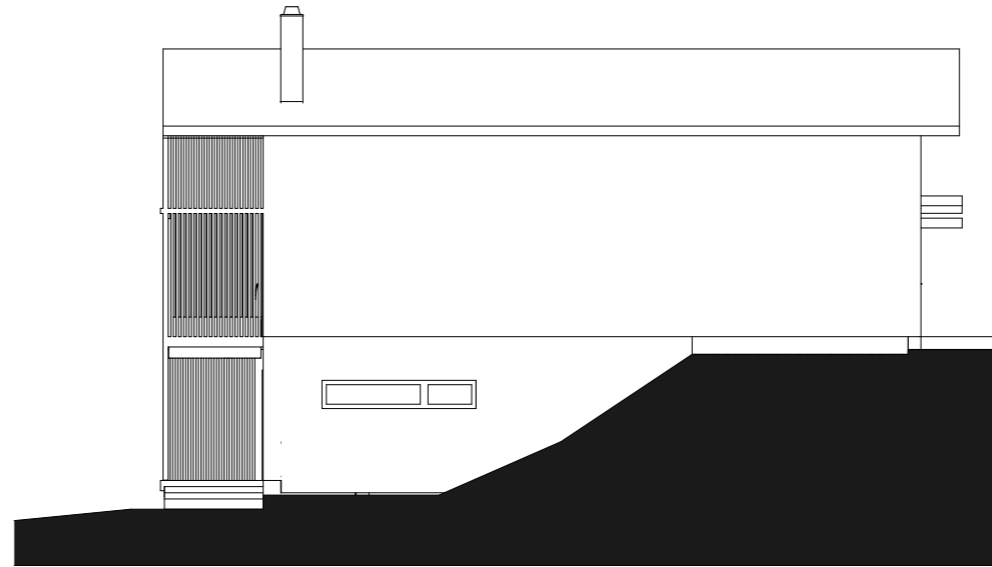
2. kerros (2)

2.

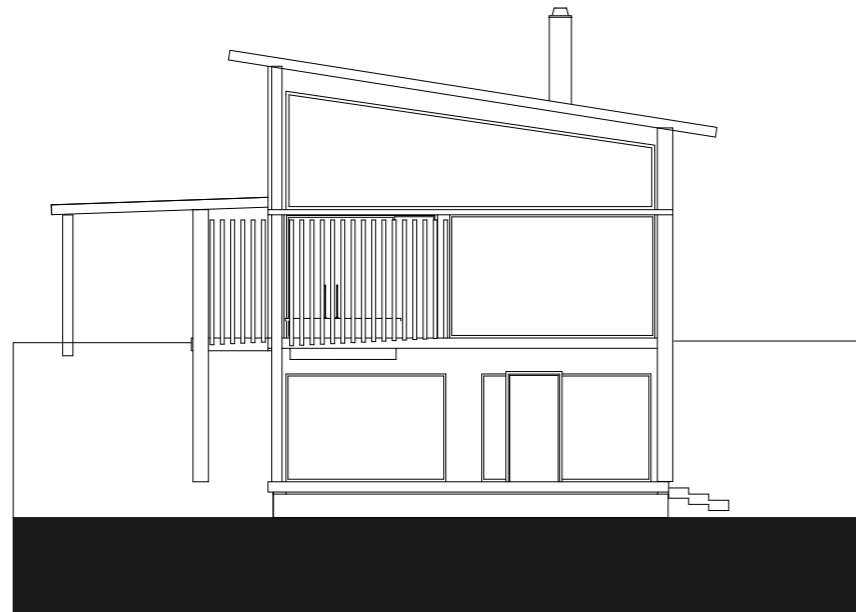
parvikerros



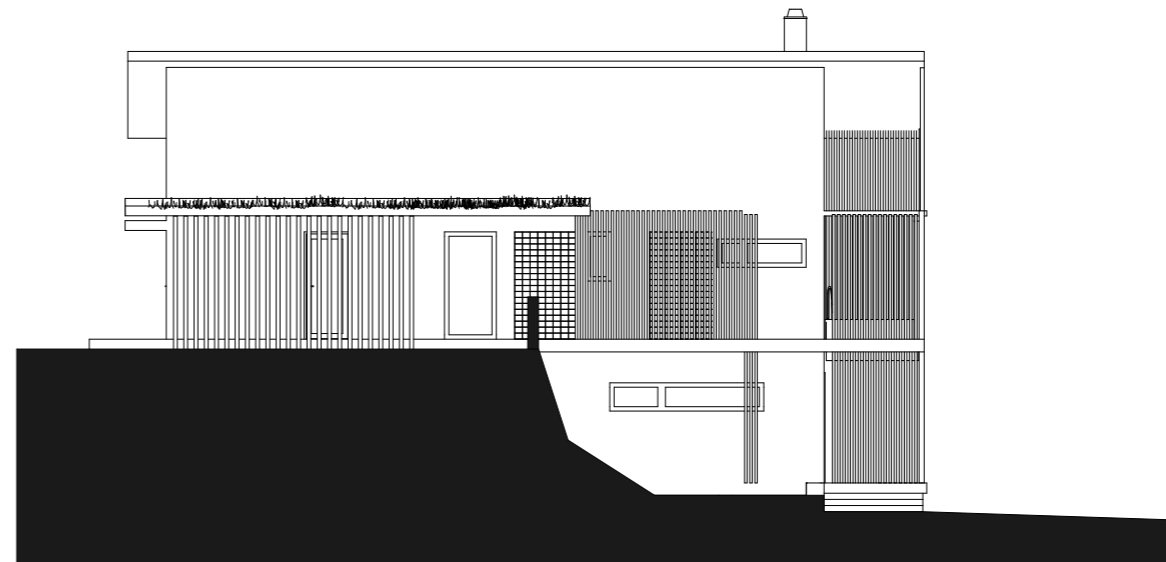
Julkisivu itään



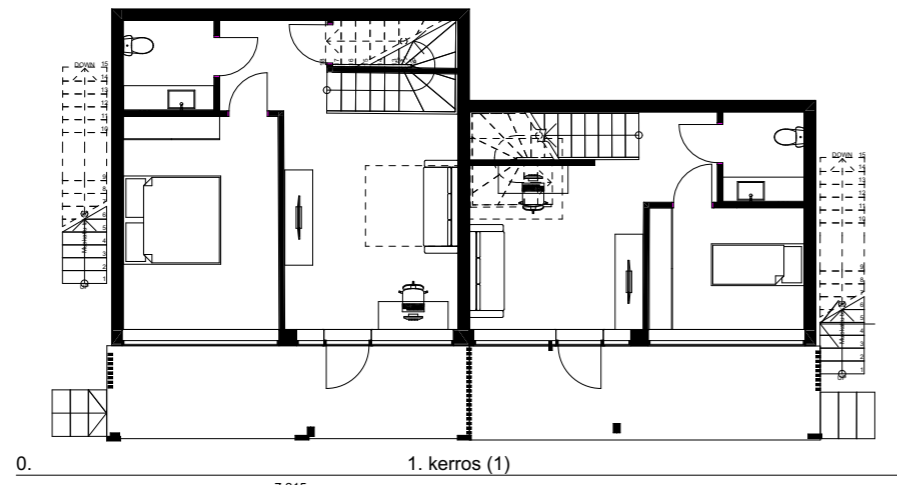
Julkisivu etelään



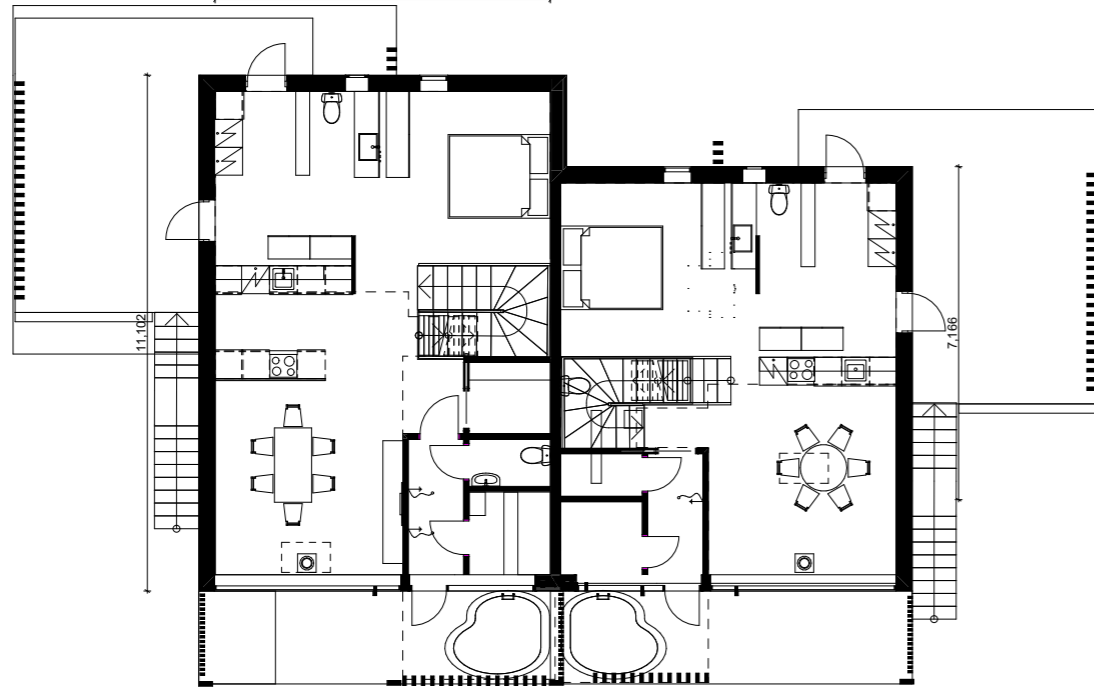
Julkisivu länteen



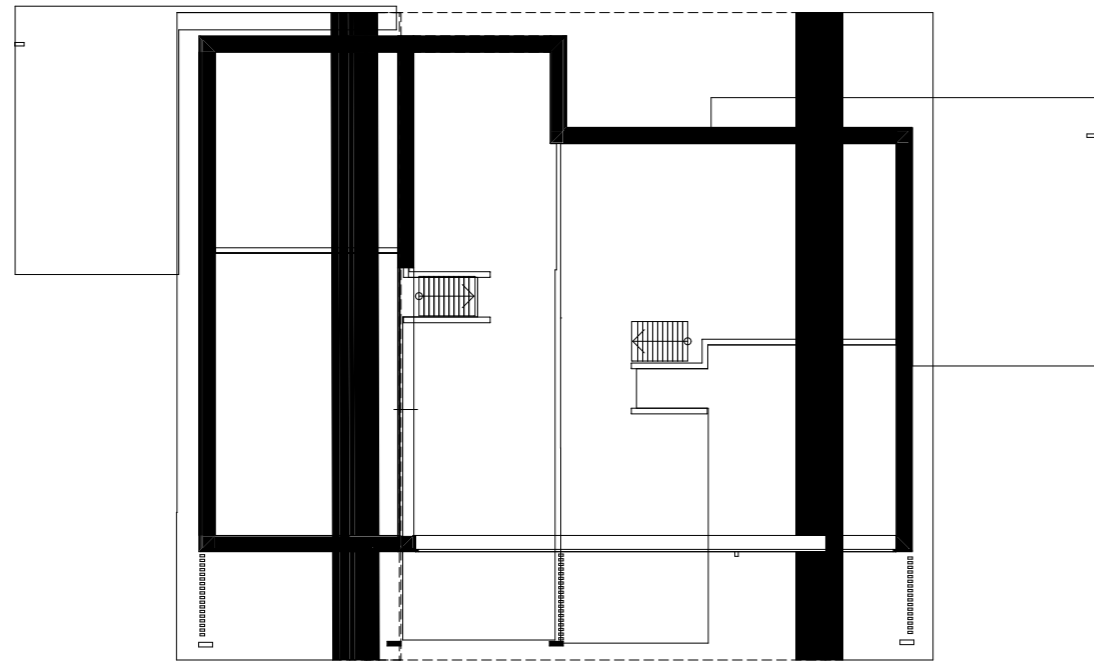
Julkisivu pohjoiseen



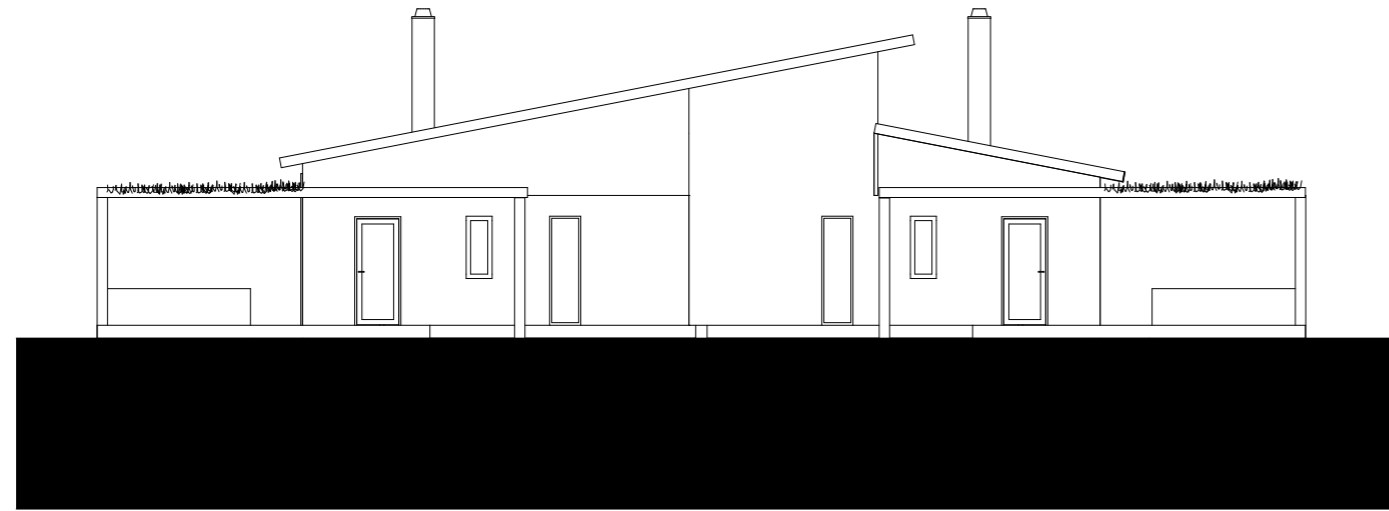
0. 1. kerros (1)



1. 2. kerros (2)



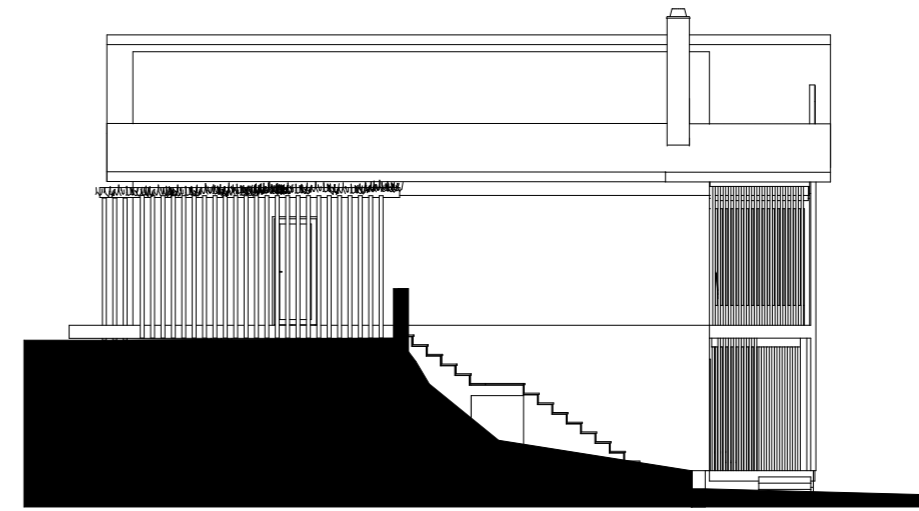
2. parvikerros



JS-01

Elevation 01

1:200



JS-02

Elevation 02 (1)

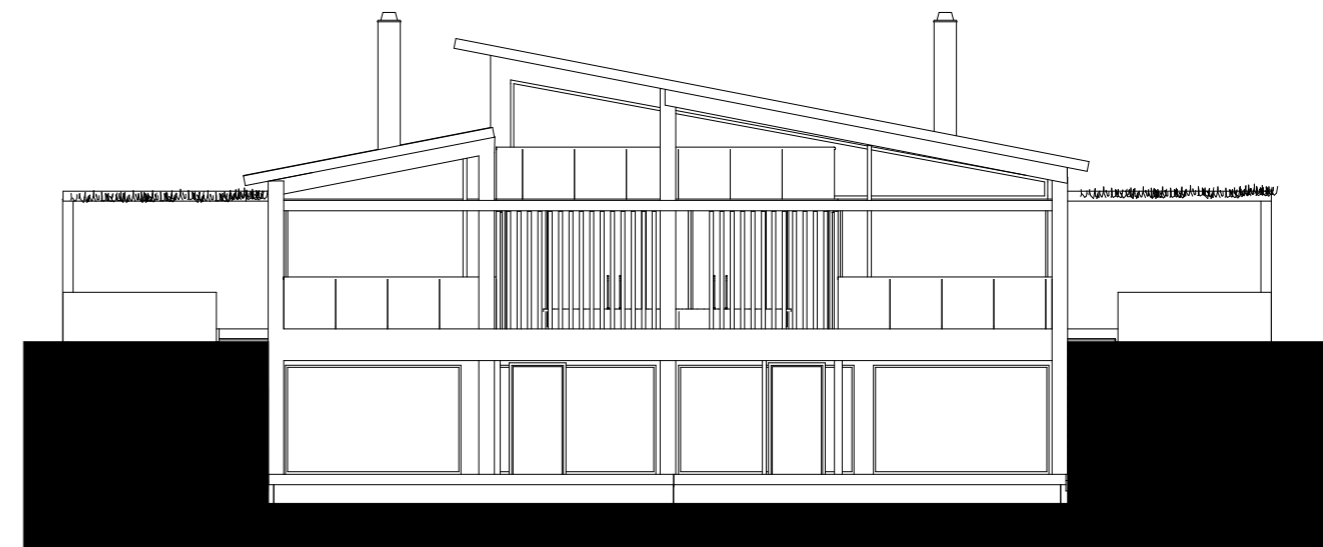
1:200



JS-04

Elevation 04

1:200



JS-03

Elevation 03

1:200

